

B R O M E C O N S O R T I U M

INDIAN STONE PROCESSOR & SUPPLIER





ABOUT US

Bro Me Consortium is a product of the love and appreciation for Natural Stones and their utilization. It was incorporated in 2017 and since then the main objective of the business has been to suggest and provide the customers with Stones as per their varied requirements. Customer satisfaction is the primary goal, Bro me consortium conducts the processing and trading of paving stones like Kota, Kandla Grey, Nimbahera, basalt, Jodhpur Stone jali, Cobbles etc to meet the ever-changing needs and taste of the Clientele. We cater to queries, Pan India and are also equipped for export requirements. We also Customize stones as per the needs of our client. So far we have supplied our products pan India and are expanding our operations to increase our reach and become a top processing and trading company in our category of business.



KOTA STONE

MIRROR STONE



HIGH POLISH STONE



Kota stone

Kota blue stone is a fine-grained variety of limestone; its gently rippled texture with varying muted shades of greenish, grayish color that resembles slate, pale brown and grey will blend with planting schemes to produce a hard surface that is sympathetic with natural surroundings. It had shown naturally occurring diversity that gives genuine stone. It is a high density stone with low water absorption, very hard wearing properties and its lightly textured surface makes it perfect for applications where a flat surface is essential.

Kota Brown

Kota Brown stone is a fine-grained variety of limestone, one of the most contemporary limestone. Its weather resistant properties ideally suited to applications indoors and outdoors where only genuine limestone will provide sufficiently authentic character. Its color shades vary in gradation of buff and the hardness of the stone gives the hand dressed edges an attractive chipped profile. Each piece has its own individual colors, textures and markings and these vary both between slabs and within single pieces.

Bottom Finish: Natural or Calibrated

Edge Finish: Sawn or Hand Dressed

Dimension*: 300mmx600mm, 450mm x 600mm, 600mm x 600mm, 600mm x 900mm

Thickness*: 19mm - 24mm and 25mm - 30mm for Natural Bottom Finish, 17 and 25mm +/- 1mm for Calibrated



LEATHER STONE



SEMI STONE



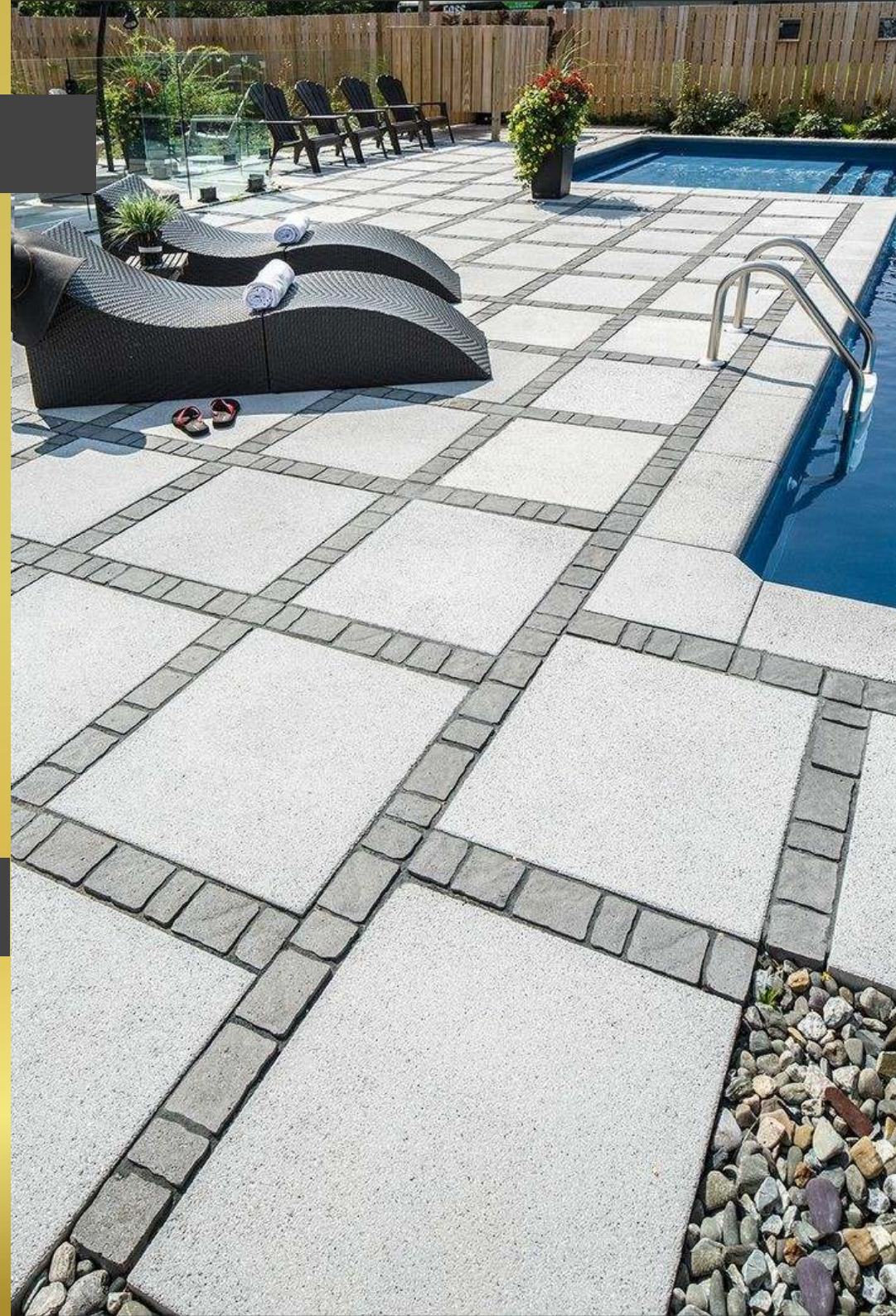
- Size: 22x22mm
- Thickness: 1 Inch
- Application/Use: Wall & Floor Coverings
- MOQ: According To Customer Need



SHOTBLAST STONE



NATURAL STONE



BROWN STONE



DESIGNER TILES



KANDLA GREY STONE



HANDCUT STONE



SIZE

90X60 cm.

60x60 cm.

60X30 cm.

30X30 cm.

SLAB

6 Ft. - 9 Ft. (L)

2 Ft. - 3 Ft. (H)



Kandla Grey

Kandla Grey is quality durable quartzite sandstone that has proven its strength and durability over many years. The ability of the stone to withstand all weather conditions is apparent by testing and many freeze/thaw test results. The presence of minor color tone variations makes it a unique and attractive building stone. The natural colour and attractive slip resistant texture makes it extremely versatile for many situations including traditional and contemporary designs. It is a practical hardwearing surface for a wide range of applications.

Stone Type: Sandstone

Top Finish: Natural, Sandblasted, Bush Hammered, Honed, Polished Bottom

Finish: Natural or Calibrated Edge Finish: Sawn or Hand Dressed

Dimension*: 300mm x 600mm, 450mm x 600mm, 600mm x 600mm, 600mm x 900mm

Thickness*: 25mm - 30mm for Natural Bottom Finish, 20/25mm +/- 1mm for Calibrated Bottom Finish



AUTUMN BROWN STONE



is another beautiful natural stone, this has the perfect colour and texture for creators looking to use a natural stone with a feel. The blend of perfect physical performance and the intensity of color are unique. Autumn Brown can be put in use as a cladding or paving material with desired thickness levels that support exciting design solutions.

Finish: Top Natural, Bottom Calibrated, Edges Sawn.

Finish: Top Natural, Bottom Calibrated, Edges Sawn.

Dimension*: 300mm x 600mm, 450mm x 600mm, 600mm x 600mm and 900mm x 600mm.

Custom sizes available upon request.

Thickness: Bottom Calibrated: 20/25mm ± 1mm

SIZE

90X60 cm.

60x60 cm.

60X30 cm.

30X30 cm.

FINISH

Natural (Rough)



BUFF STONE



SIZE

90X60 cm.

60x60 cm.

60X30 cm.

30X30 cm.

FINISH

Natural (Rough)

Honed



RAJ GREEN



SIZE

90X60 cm.

60x60 cm.

60X30 cm.

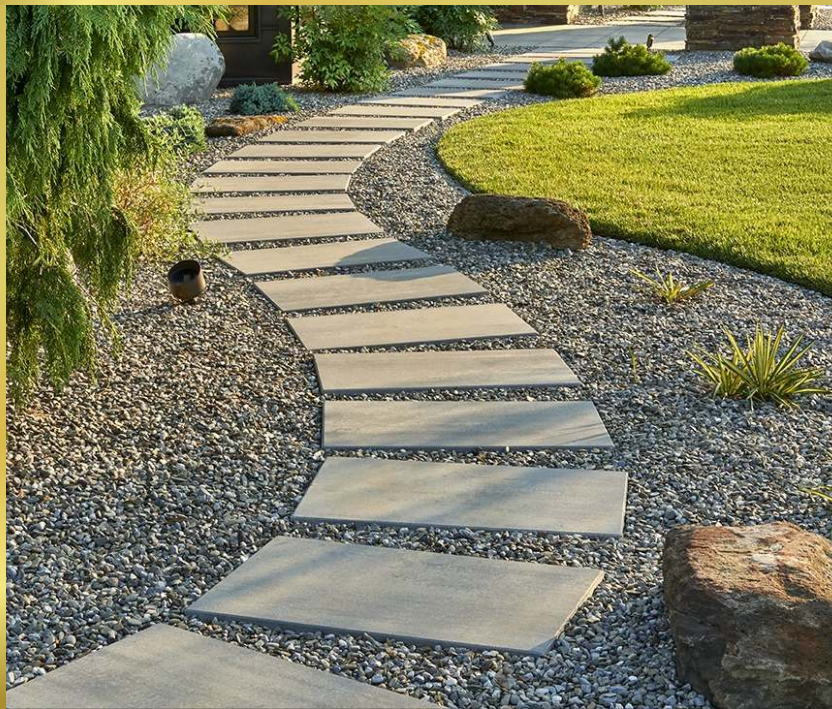
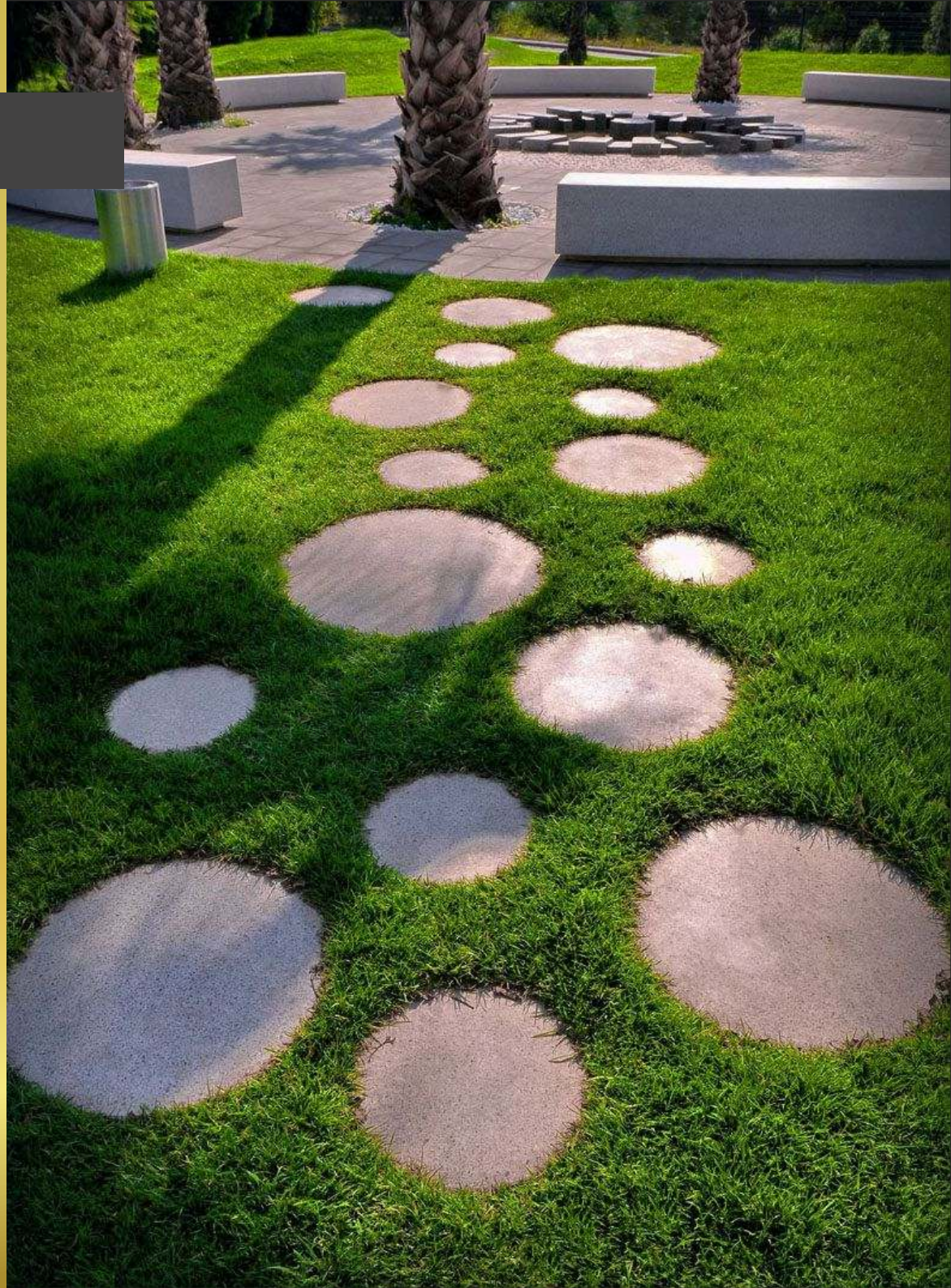
30X30 cm.

FINISH

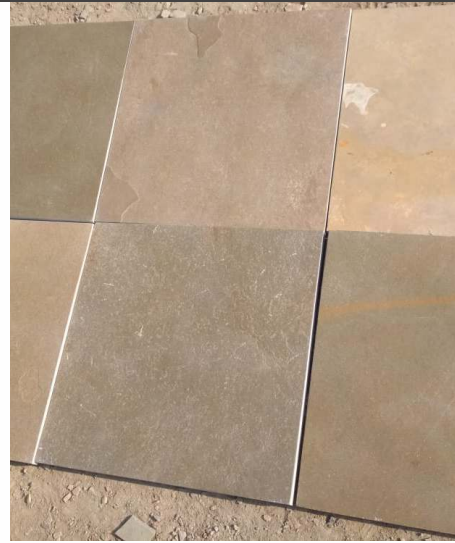
Natural (Rough)

Honed

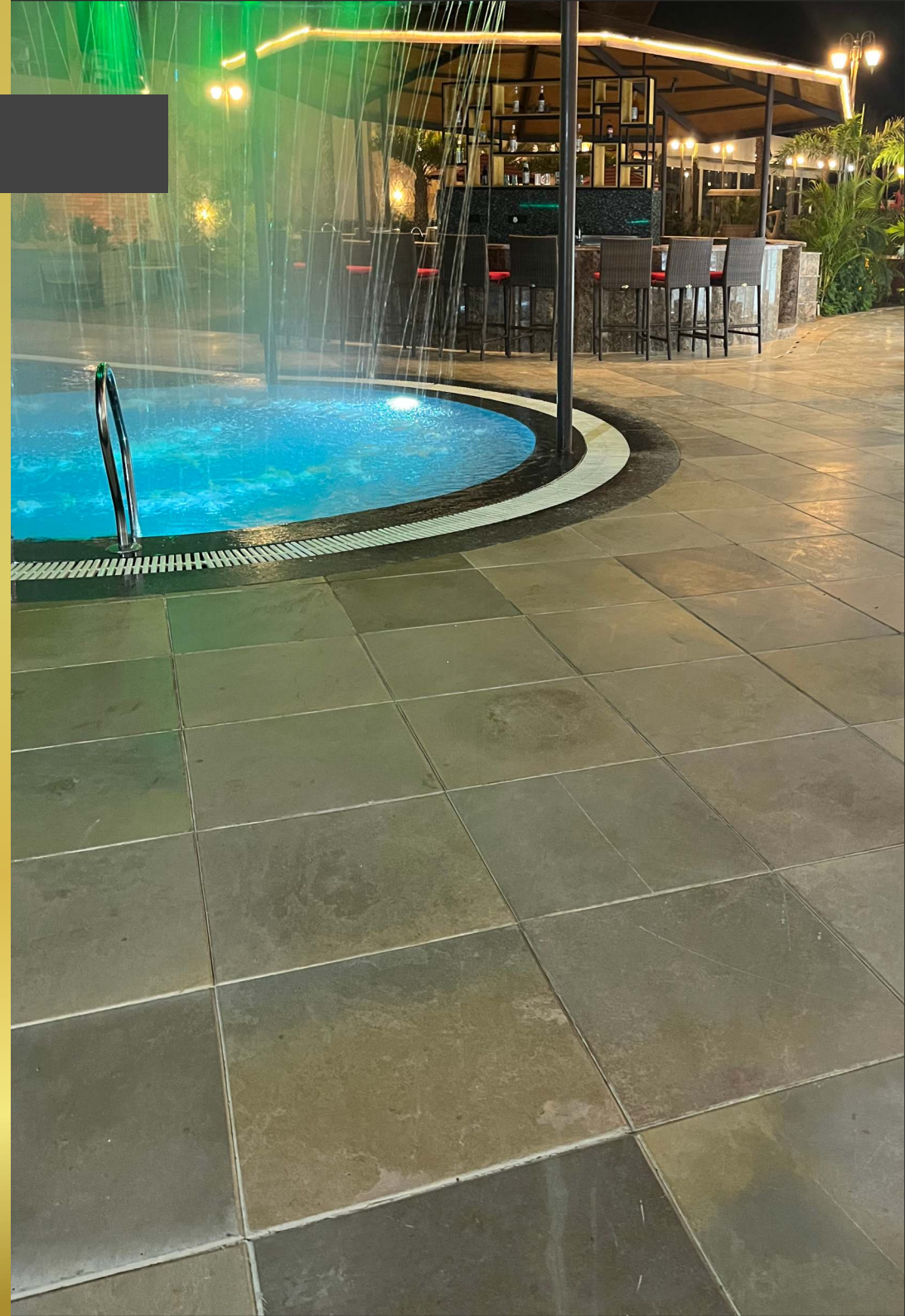
STEP STONE



NIMBAHERA STONE



Marble is a metamorphic rock composed of re-crystallized carbonate minerals, most commonly calcite or dolomite. Marble is typically not foliated, although there are exceptions. In geology, the term marble refers to metamorphosed limestone, but its use in stone masonry more broadly encompasses unmetamorphosed limestone. Marble is a metamorphic rock composed of re-crystallized carbonate minerals, most commonly calcite or dolomite. Marble is typically not foliated, although there are exceptions.



COBBLES STONE



GREY STONE



RED STONE



MULTICOLOR STONE



BLACK STONE

SIZE

(Handcut/Tumbled)

10X10cm

14X14cm

20X10cm

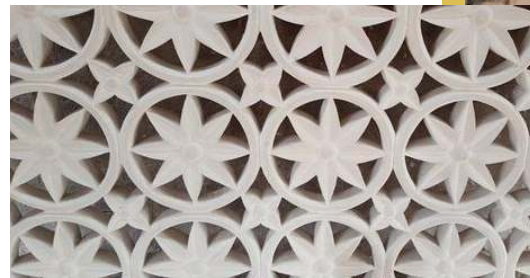
20X14cm

THICKNESS

3-5, 4-6, 5-7, 6-8, 7-9 cm



JODHPUR STONE JALI



BROME CONSORTIUM CONTACT US



SHRIPAT SINGH MEHTA



VIRGINIA DSOUZA



+91 - 998 333 1345



+91 - 998 333 1345



enquiry@bromeconsortium.com



29-N Acharya Marg, Opp. Bhartiya Lokkala Mandal, Udaipur - 313001 (Raj.)